

[Subscribe](#)[Past Issues](#)[Translate ▼](#)

News From the South Village Stewardship Board



The South Village Stewardship Board works to protect, support, and enhance the South Village Common Lands, including the Open Space and the Farm.

Lots on Corner of Spear and Preserve Sold: Weigh in on What Happens Next

You may have noticed that the properties on the corner of Spear Street and Preserve Road were listed for sale this past autumn. Formerly owned by the Long Family, 30 of the total 39 acres is designated habitat adjacent to the Great Swamp Preserve of South Village.

This exceptional property caught the attention of the South Burlington Land Trust, which partnered with the North East Agricultural Trust to acquire, and temporarily hold, the property. They noted that the project “has great potential to further the city’s efforts to conserve high priority natural lands.” The two entities are



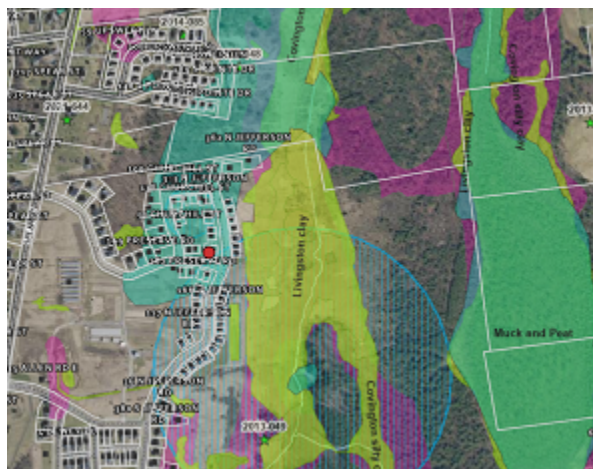
working together to conserve the land and engage partners in conservation efforts. There are also two existing homes on the land, and they are collaborating with South Village’s farm tenant, Common Roots, and other

[Subscribe](#)[Past Issues](#)[Translate](#) ▼

This transfer gives the community the opportunity to consider its future. The Land Trust would like to hear from you! [Read the letter from the South Burlington Land Trust to residents of South Village](#) and the South Pointe neighborhood here. [Do you want to jot down some initial thoughts? Access our online bulletin board here.](#)

Use This Handy Tool to Learn More About Our Wetland Preserve

Have you ever wondered where your house is in relation to the South Village wetlands, and why they are important? This article, [Wetland Functions and Values: The Gifts That Keep on Giving](#) details the state of Vermont's wetlands, and contains links to explain and identify wetlands. To see your property, plug your address into the [Wetland Screening Tool](#), click "Link to Wetland Map," and view the site-specific wetland inventory map. Zoom in and out, or engage a variety of filters. It's fun to see our place in our ecosystem, particularly the Preserve, which is comprised of Covington and Livingston Clay. (The screening tool only works on a laptop or PC, not a mobile platform.)



Meet Your New South Village Stewardship Board Members!

South Village residents Scott Baker, John Bakewell, Vicky Tebbetts, and George Zipf were elected to the South Village Stewardship Board.

Subscribe

Past Issues

Translate ▼



Scott works in higher education, leading programming in experiential, outcome-oriented business education in the country's fastest-growing and most profitable areas of business. He and his family are close-knit and avid outdoor enthusiasts. When not at work, Scott may be found taking advantage of Vermont's beauty on a hiking trail or a ski slope, forest bathing or searching for fresh tracks.

John Bakewell

John came to South Village with a background in arboriculture. In addition to conventional tree practice, he specializes in the eradication of woody invasive plants in generally upland environments. He serves as a liaison with residents who have concerns about potential invasives on their property. John has been a firefighter and EMT, and he is an avid hiker and XC skier. You may have seen him biking through the neighborhood with his dog leashed beside him.



Vicky Tebbetts

Vicky helps others increase their reach and the impact of their education efforts. As a Stewardship Board member, she has taken the lead in communications on behalf of the Board. Much of Vicky's work (and play!) centers around her interests in recreation, conservation, and a strong local economy. She loves the outdoors and can be found hiking, biking, doing yoga, hanging out with her teens, and loving life in Vermont.

George Zipf

George and his wife have wanted to move back to Vermont since the year 2000, and COVID and validation of remote work helped make the move happen. The preserved space, farm and the concept of the agrihood made South Village particularly attractive to them. A trained statistician, George loves growing vegetables, hiking, swimming, and sailing. Now that he is firmly settled in Vermont, he is hoping to learn to drive a tractor.



[Subscribe](#)[Past Issues](#)[Translate ▼](#)

As winter unfolds, the South Village trail network is open for walking, skiing and snowshoeing. Enjoy an exhilarating jaunt outside in our 100 acre Preserve! Perhaps you will see evidence of rabbits, coyotes, and winter birds. Please remember, dogs and wheeled vehicles are prohibited in the Preserve because it is conserved land. Always practice outdoor safety, bring plenty of clothing, plan your route ahead of time, and leave plenty of time to complete your adventure. The best place at which to enter the Preserve is from Midland Road. Have fun!



COMMON ROOTS 2022 YEAR IN REVIEW

The year 2022 was a busy one for our farm tenant, Common Roots. Common Roots works the preserved farm land at South Village. They work in partnership with the City of South Burlington at the four-acre Hubbard Park Farm just down the road off Spear Street, and with the leadership and residents of South Village at our Farm at South Village. Both of these farms are organic certified with NOFA and the ROP Real Organic Project. They are farmers, educators, youth, and community members collaborating to build a sustainable future through food and land stewardship education.

[Subscribe](#)[Past Issues](#)[Translate](#) ▼

COMMON ROOTS

2022 GROWING SEASON

MILESTONES

Together Common Roots provided organic veggies, healthy meals, and summer lessons to local families and households who utilized three local food shelves. They taught food independence and self-sufficiency on their farm and have continued their other four food education programs (for 15 years and counting!).



ADDRESSING FOOD INSECURITY

Common Roots provided 40+ varieties (over 6,000 pounds) of organic fruits, veggies, and herbs at the Common Roots farmstand at the South Burlington Food Shelf, and donated almost 2,000 pounds to Feeding Chittenden. They prepared \$12,000 worth of healthy, fresh products from their licensed kitchen.

SUPPORTING FOOD INDEPENDENCE

Common Roots cultivated and grew over 600 plant starts, including tomatoes, lettuce, cucumbers and peppers. They offer Food Shelf participants tips on how to grow their own food on a budget with compost, planters, and hands-on instruction.



MAKING CHANGE THROUGH FOOD EDUCATION

Common Roots built incentives to bring 72 Food Shelf participants to the Growing Gardens at the farm at South Village. They learned how to grow food in raised beds. Participants earned farmstand dollars for their time and good work!

[Subscribe](#)[Past Issues](#)[Translate](#) ▼

Common Roots expanded its Abenaki Gardens to cultivate heritage crops, sending over 3717 corn and bean seeds to the Abenaki Food Shelf or using them for processing. In addition, they produced artichokes and ground cherries for the Abenaki Land Link Project.



ENGAGING VOLUNTEERS

Common Roots utilized more than 80 interns throughout the organization. They have more than 30 key volunteers supporting their work in various capacities, including planning, editing, customer service, bookkeeping, payroll, taxes, and more.



Did you know South Village has three Facebook pages?

[South Village Vermont](#) - An active resident-driven group featuring residents' news, photos and updates

[South Village Community \(Arrowhead Group\)](#) - Updates from our maintenance contractor, Arrowhead

[South Village Real Estate](#) - Posts about home closings within the community

The South Village Stewardship Board

The Stewardship Fund is governed by a Board composed of a maximum of nine

[Subscribe](#)[Past Issues](#)[Translate ▼](#)

Village Stewardship Board.

Current members of the Board include (in alphabetical order):

- Nick Andrews, Treasurer (nandrews66@gmail.com)
- Scott Baker, Member (shbaker7@gmail.com)
- John Bakewell, Member (johnbakewell@comcast.net)
- Dana Basiliere, Member (dana@vermontishome.com)
- Susan Darnell, Chair (susandarnell@comcast.net)
- John Owen, Secretary (jrowen18@gmail.com)
- Vicky Tebbetts, Member (vtebbetts@gmail.com)
- George Zipf, Treasurer (georgezipf@gmail.com)

Copyright © 2023 South Village Stewardship Board, All rights reserved.

Want to change how you receive these emails?

You can [update your preferences](#) or [unsubscribe from this list](#).